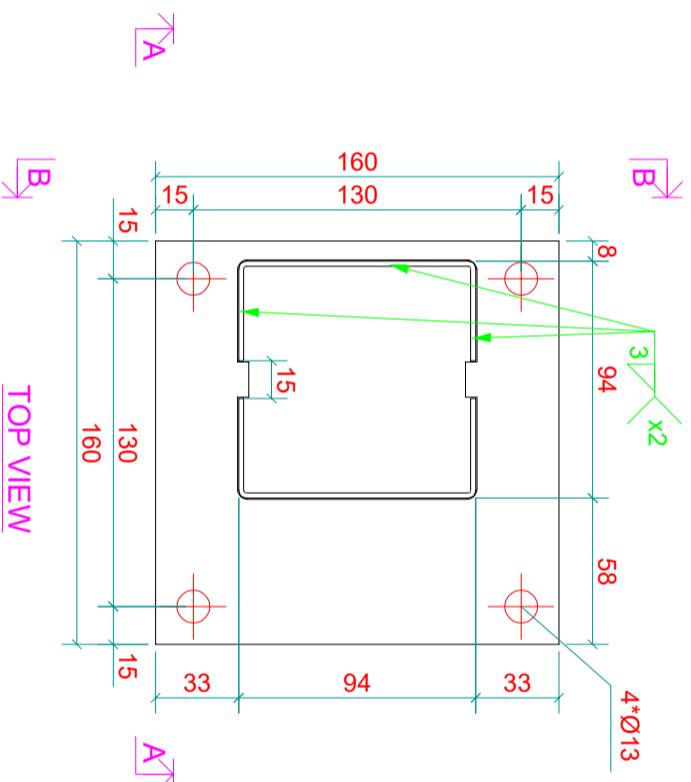
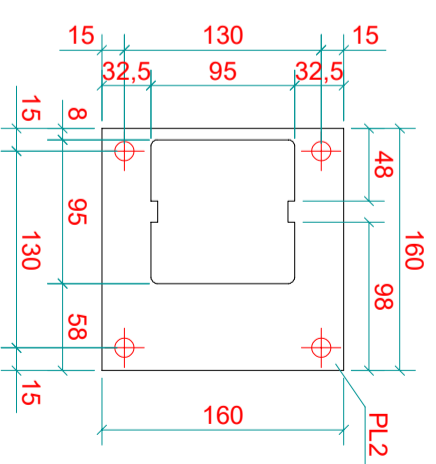


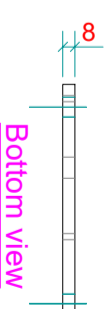
SECTION B-B
1:3



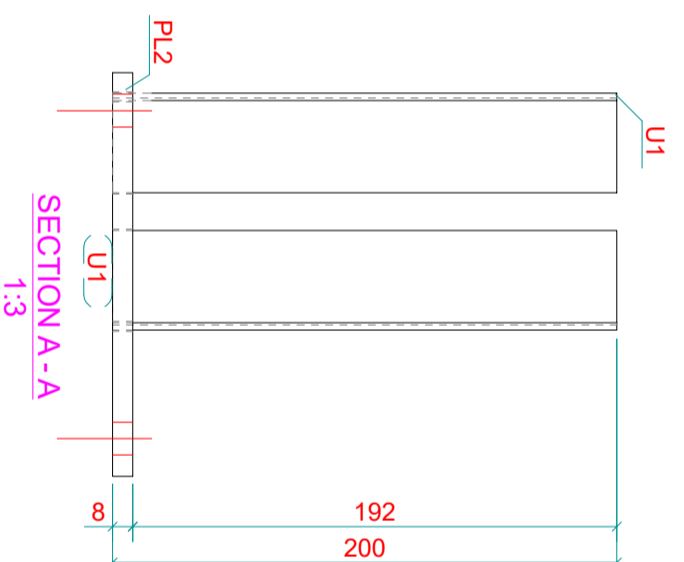
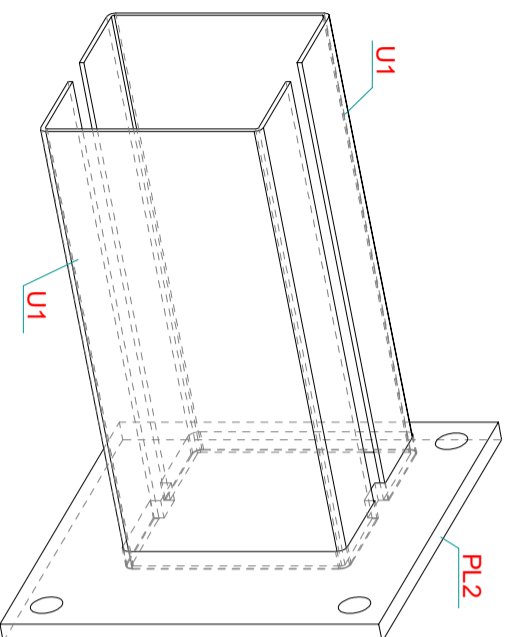
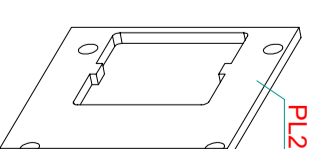
TOP VIEW



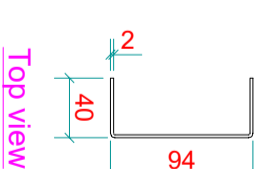
FRONT VIEW



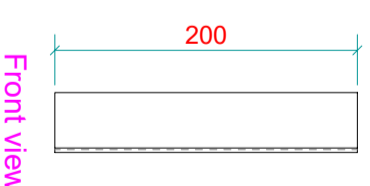
BOTTOM VIEW



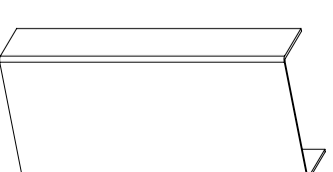
SECTION A-A
1:3



TOP VIEW



FRONT VIEW



ASSEMBLY PART LIST						Assembly: A2		Length (mm): 160	
Finish: finish						Number: 1		Number: 1	
Part	Profile	Material	Number	Length (mm)	Weight (kg)				
PL2	FLAT8*160	S235JR	1	160	1.1				
U1	PL2*167.3	S235JR	2	200	1.1				
			Total per assembly		2.1				

PROJECT	VOET PLAAT
SUBJECT	VPPK.1010.200
BUILDER	

Designer	Sead M.
Date	21.12.2023
Scale	1:5 1:3 1:5



Material types and grades: Plates and profiles S235JR according to NEN-EN 10025-2, tubes and RHS profiles S355J2H according to NEN-EN 10210-1 (hot rolled) S275J0H according to NEN-EN 10219-1 (cold rolled)	
Welds a-e4, unless mentioned different, according to NEN-EN ISO 2553:2014, Bolt grade 8.8, unless mentioned different	
Project	Tekla Structures model / Rethojat_Columns Supports_REV.02 printed on 22.03.2024
Drawing: A [A2]	Size: A3
Status:	

Fabrication and erection acc. to:	NEN-EN 1090-2:2018
Execution class:	XXX
Effective tolerance class:	XXX