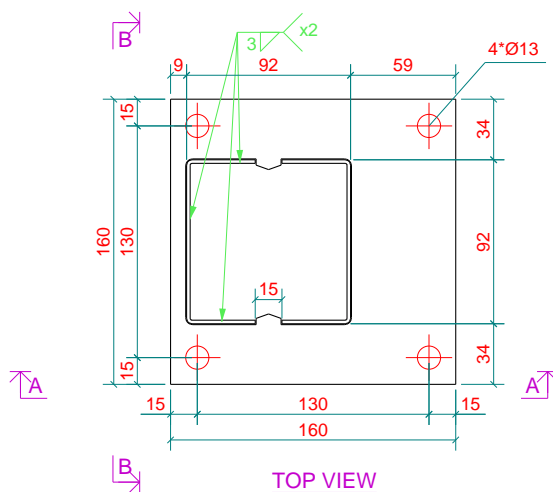
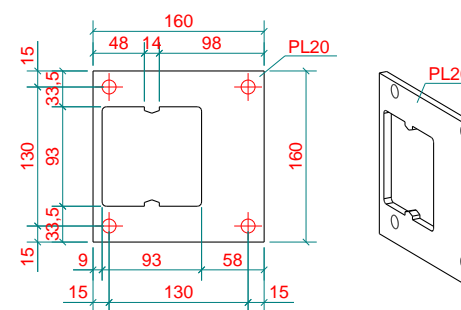


SECTION B - B
1:3

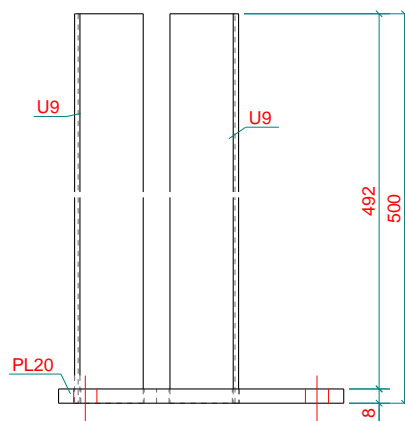
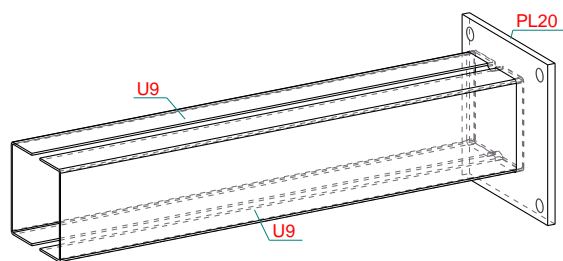


TOP VIEW

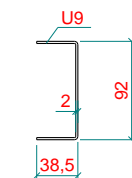


Front view

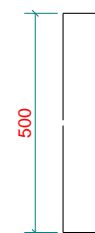
Bottom view



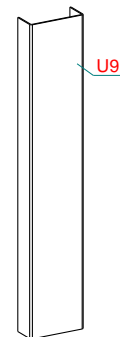
SECTION A - A
1:3



Top view



Front view



| ASSEMBLY PART LIST | | | | | |
|-----------------------|-----------|----------|-------------------------|-------------|-------------|
| Assembly: A29 | | | Length (mm): 160 | | |
| Finish: finish | | | Number: 1 | | |
| Part | Profile | Material | Number | Length (mm) | Weight (kg) |
| PL20 | FLAT8*160 | S235JR | 1 | 160 | 1.1 |
| U9 | PL2*163.3 | S235JR | 2 | 500 | 2.6 |
| Total per assembly | | | | | 3.7 |

| | |
|----------|---------------|
| PROJECT: | VOET PLAAT |
| SUBJECT: | VPKP.1010.500 |
| BUILDER: | |

| | |
|-----------|-------------|
| Designer: | Sead M. |
| Date: | 22.03.2024 |
| Scale: | 1:5 1:3 1:5 |



| | |
|---|--|
| Material types and grades: Plates and profiles S235JR according to NEN-EN 10025-2, tubes and RHS profiles: S355J2H according to NEN-EN 10210-1 (hot rolled) S275J0H according to NEN-EN 10219-1 (cold rolled) | |
| Welds a=4, unless mentioned different, according to NEN-EN-ISO 2553:2014. Bolt grade 8.8, unless mentioned different | |

| | |
|----------|---------|
| Project: | |
| Drawing: | A [A29] |
| Status: | |
| Size: | A3 |

| | |
|----------------------------------|--------------------|
| Fabrication and erection acc. to | NEN-EN 1090-2:2018 |
| Execution class: | XXX |
| Effective tolerance class: | XXX |